

# FOG DISPENSER



## ASHRAE SEPTEMBER 17 MEETING

**PROGRAM:** LAB CONSIDERATIONS THROUGH A PANDEMIC

**SPEAKERS:** MICHELE SAGEHORN, CEM, LEED AP, PRINCIPAL  
TODD SEE, PE, LEED AP BD+C SENIOR VICE PRESIDENT  
JAMES FALCONER, PE, CENG, , PRINCIPAL



**MICHELE SAGEHORN** has worked for over 15 years on high performance buildings, including as a leading commissioning agent. From her background as a quality assurance engineer in the automotive industry, she brings to commissioning a standard of care that is unique to the built environment. Her experience spans numerous project types, including leadership on eight ZNE and twelve carbon-neutral buildings. In 2018, Michele and her colleagues launched Red Car Analytics, a company dedicated to engaging clients in building and operating high performance buildings through analytics.



**TODD SEE** is a Senior VP and mechanical engineer at WSP USA with 29 years of experience in the industry. Based in San Francisco, Todd serves as West Coast science and technology practice leader, focusing on sustainability and low-energy design. His resume of projects include the UCSB Bren School, one of the first U.S. LEED Platinum buildings; the University of Hawaii Cancer Research Building, the first to use chilled beams in Hawaii; and the NOAA Regional Center, which incorporates a passive cooling system that uses 100 percent outside air, with no fans.

*Continued on next page*



**September 17**

**12:00 PM - 1:00 PM**

**Goto Meeting**

**Link will be shared to people who have registered**



### Pricing

\$20 - Chapter Members  
\$25 - Non-Members  
\$20 - 12 SL Members

*Hit a financial hardship?*

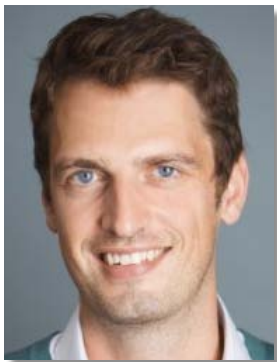
*If so, we have an "offer what you can" option too.*

### INSIDE THIS ISSUE:

Event Calendar..... 2  
RE President's Message ..... 3  
Historian .....4-5  
Student Activities..... 6  
Sustainability Committee ..... 7  
YEA ..... 7  
Membership Promotion..... 8

Research Promotion..... 9  
Government Advocacy ..... 10  
Redwood Ashrae..... 11  
CTTC ..... 12  
Board and Chair Members ..... 13  
Sponsorship rates..... 14-15

GOLDEN GATE ASHRAE  
FOG DISPENSER  
VOLUME L17- NUMBER 1  
SEPTEMBER 2020



**JAMES FALCONER** is a Principal and licensed mechanical engineer with Affiliated Engineers in San Francisco. With 18 years' experience in high performance building design, James focuses on the life-science market sector. Applying his passion for energy efficiency with an analytical approach, James seeks to deliver innovative design solutions for laboratory and research buildings.

Flagship projects include BioMed Realty's Gateway of the Pacific campus, recently certified LEED Platinum, among others that adopt a range of technologies including heat-

recovery chillers, evaporative cooling and exhaust air heat recovery. James has recently been focusing on design solutions for all-electric lab buildings that will help pave the way for carbon neutrality within the sector.

### PRESENTATION SUMMARY:

#### Learn about the:

- *Current challenges related to HVAC systems during a pandemic*
- *Production vs Safety when bringing employee back to a laboratory*
- *Sustainability & Energy consumption*

## EVENT CALENDAR 2020-2021

FOR MORE INFORMATION AND DETAILS  
GO TO [WWW.GGASHRAE.ORG](http://WWW.GGASHRAE.ORG)

### THURSDAY September 17th

TOPIC: Lab Considerations through a Pandemic

SPEAKER: Panel of Speakers

LOCATION: Virtual

### WEDNESDAY October 14 & 15 10-12PM

TOPIC: Seminar: Electification

SPEAKER: Planned Ted Tiffany Seminar Committee

### THURSDAY November 19th

TOPIC: Radiant + Ceiling Fans

SPEAKERS: Paul Raferty + Fred Bauman  
(Joint w IBPSA)

LOCATION: Virtual

### TUESDAY December 17th

TOPIC: Joint Meeting with Redwood Empire:  
Analysis of Airflow Patterns and Flow Path  
of Airborne Contaminants

SPEAKER: Kishor Khankari (Distinguished Lecturer)

LOCATION: Virtual

### THURSDAY January 21st

TOPIC: Refrigeration

SPEAKER: TBD

LOCATION: TBD

### THURSDAY February 18th

TOPIC: Debrief on ASHRAE Winter Conference

LOCATION: Outdoor

### WEEK OF FEB 21

TOPIC: Tentative government Outreach  
day during engineering week

LOCATION: CA state capitol

### THURSDAY March 4th

TOPIC: Visit from ASHRAE President  
Chuck E. Gullledge III

LOCATION: TBD-

Joint meeting with San Jose Chapter

### THURSDAY April 15th

LOCATION: Outdoor

### THURSDAY May 20th

TOPIC: Product Show - Partnership with ASPE

LOCATION: Outdoor

### THURSDAY June 17th

LOCATION: Outdoor



Dear Golden Gate ASHRAE Members,

I am very excited to be the Chapter President for this next Society year! I wish I was getting ready to see you all in-person at our first Chapter meeting, on September 17th at 12PM, but given COVID-19 concerns, our meetings are virtual until at least the end of 2020.

With that being said, this year has brought about a lot of changes already. Our Chapter Board of Governors and Committees have been working all summer to ensure that we are ready for the 2020-2021 year! We have strengthened all of our committees, with each committee having at least two people. I am especially proud of how many people within our Chapter have stepped up and volunteered to assist us. I knew early on, in assuming the President role, that this year was going to be a success, but only if we had a strong foundation of Committee Chairs and Members.

One of our biggest committee overhauls is the Chapter Technology Transfer Committee: Manalee Nabar and Blaine Conner are bringing in their previous experiences from the East Coast. Both are taking this committee head on and shaping it to bring you quality chapter programs.

As we are virtual through the end of the year, communication with our members is key. Moana Reynau, our first year Board Member, along with Theo Garcia, are on the Communications Committee, a crucial effort for this calendar year.

Last year, we missed our Research Promotion goal. It was a rough year financially, to say the least. However, Brian Chacon, our RP Committee Chair (Also President-Elect and just overall rockstar for our chapter), will spearhead fundraising efforts, but will tap Jason Lesser for his help, Past President for the 2019-2020 year and former RP Committee Chair. You may also hear from Board Members, as we will all pitch in to help hit this year's target. Paraphrasing our Regional RP RVC Heather Schopplein, the reason ASHRAE was able to respond so quickly to the epidemic, was a direct result of years of ASHRAE funded research on HVAC systems and infectious diseases.

The Student Activities Committee continues to impress me every year. Alicia Tan was recognized as the Best SA Committee Chair within Region X at the Chapters Regional Conference this year. I congratulated her at our last Board meeting, to which she quickly responded that the committee is a team effort, and others helped to win this award. Talk about such a wonderful and humble response! I am proud to work with her and the entire Student Activities Committee.

Of course, Membership Promotion is as important as ever. Sajil Karki and Michelle Dionello (Another Past President pitching in!) will work to show you the benefits of your ASHRAE membership this year. They have a ton of great ideas lined up.

Government Affairs Committee, will continue to have Mitch Pinsker at the helm. He is taking this committee and just molding it into something really impactful. I personally think this is one of our most important committees, especially given recent years' erosion of energy, environmental and climate regulations.

We also have new life being breathed into two committees - the Diversity, Equity and Inclusion Committee and the Sustainability Committee!

I could go on... Young Engineers in ASHRAE, Historical Committee, Honors & Awards, Auditing, the Seminar Committee, are all busy with planning and preparations for another successful year.

Our Board of Governors will ultimately be supporting our Chapter with the heaviest lift. From touching base with Committees, to the Chapter's financials, Fog Dispenser, preparing for our virtual meetings, we are busy! And not just busy with ASHRAE... Both John Gardner and Jeremy Martinez have expanded their families, with newborn babies born in the month of August, joining Sanjil Karki, who had a little boy in June.

With that being said, please join us this year and make the most of your membership. Please attend our quality programs, whether it is a Chapter meeting, the Electrification Seminar on October 14th and 15th, or some of the upcoming Student Activities or Young Engineers' events. I can assure you, you won't be disappointed.

Warmly,

Alyse Falconer, Ashrae President 2020-2021





*Tom Gilbertson, Chapter Historian*  
**September 2020**

***Historically....what are the most important technological areas...to the World?...What is it that we "could not live without?"***

Do not confuse "want"...with "need"...Since ASHRAE is the repository or all vital, and distinctive technology that allows mankind to live...and flourish...that is a fair question to ask ourselves....

The "covid-thing" has probably given each of us the opportunity to evaluate any number of items that here-to-fore we simply didn't have the time...or the focus...or to evaluate...Take another look at last June's (written in early May) Historian-comments re the pandemic.

Historically...our Society first solved the issues related to decent heating....Solved it first because it was pretty much a universal problem/need...and second...it was not too expensive to cure; never-the-less it had to be done. The Society went from fireplaces, to our patron saint's "stove"...then to steam heat...then central steam heat...then gas furnaces...hot water heat and individual room control...and improved options along the way.

We all needed real, dependable "heat"...in our North American climate...so we fixed it.

Comes then "refrigeration"...comfort concerns eventually...but initially food preservation and food production.

"Refrigeration" is a little more complicated than just "heat"...and a bit more expensive...our Society began with substantial investigation of ammonia absorption refrigeration...and produced more than 100 years-ago...300 to 400-ton capacity cooling plants...without the use of electricity....(So much for listing "electricity" as being absolutely vital.)

Once society had "cooling"...it never looked back...it continued to find better and cheaper ways to have refrigeration. Our populace "likes" well preserved and shipped food stuffs...(think Salinas Valley Produce)...as well as cold beverages...refrigeration starting with manufactured ice...developed very nicely.

Our Bay Area had some of the "300-pound block ice plants" (Santa Rosa Ice and Cold Storage) that the railroad-shipping required. Ammonia-based compression refrigeration...and then compressor manufactures actually based in the Bay Area...Cyclops Refrigeration since 1873...and an office of Baker Ice Machine.

The "300-pound ice blocks" were used in the refrigerated railcars of Pacific Fruit Express (PFE)...(More on "icing" railcars and PFE history some other time)

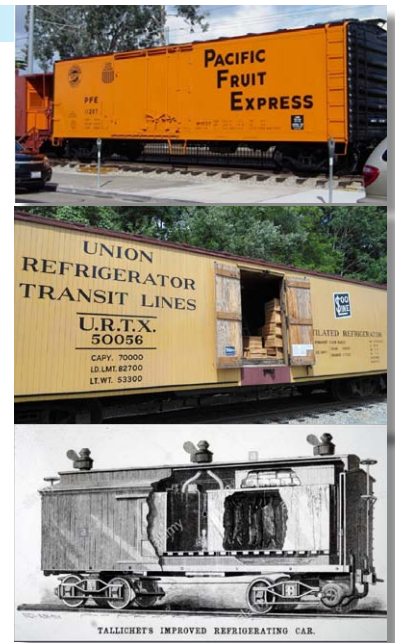
Cyclops made Corliss steam engine-driven ammonia compression systems as early as 1873...and by 1920 was making home refrigerators in San Francisco at 837 Folsom Street.

Baker Ice Machine made ice plants with as many as 340 - "300-pound" cans for making what I call "railroad ice". Additionally, Baker made refrigeration systems for the tuna boats in the fishing industry...in addition to serving the complete dairy and poultry industry's needs for refrigeration.

Here is the San Francisco/ASHRAE connection...Fred Vann worked with Hayes Cory, chief engineer of Baker Ice Machine during WWII. Fred was the Navy's representative to conversion of refrigeration systems in San Diego. After the war Fred Vann went to work for Hayes...and Fred was sent to San Francisco to operate a Baker Ice Machine-office. Fred left Baker...and started Vann Engineering, an early-on design/build mechanical contractor.

Fred Vann, as President of one of our predecessor Societies ASRE... in 1962 hired a nice, young Stanford-engineer named Mike Cory...(The son of Hayes Cory)...and made Mike... initially the chief engineer, and ultimately the President of Vann Engineering in Lafayette, California.

So...Refrigeration and "Ice"...figure into our Golden Gate ASHRAE history.

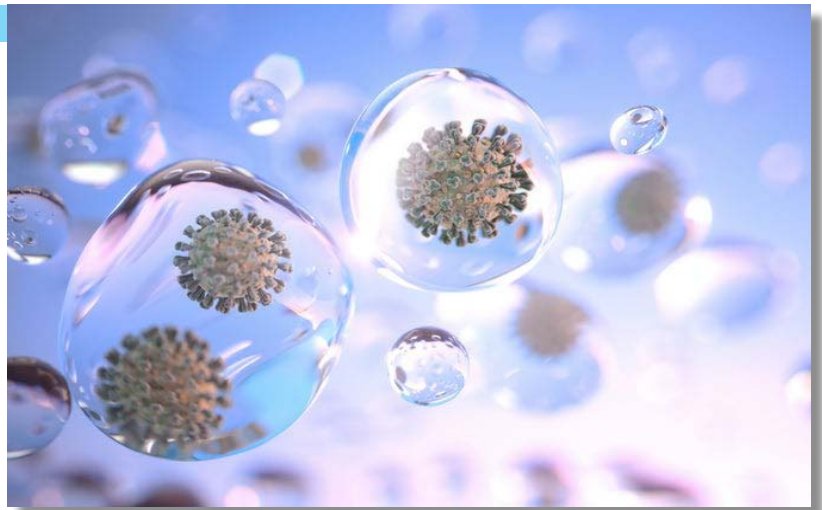


Tom Gilbertson, Chapter Historian

JUNE 2020

*"Take me out to the ball Game...Take me out to the crowd!...Buy me some...." (Jack Norwood,, Albert Von Tilzer 1908).... OOPS...we're not singing that song this year! ... everything is changing!...*

(You know the song...and just so you do know... "Cracker Jack" has already been banned at all ballparks!...but that is another bit of history)



What is ASHRAE's Golden Gate Chapter's take on this Covid-10 experience?...First, it has changed the historical format for our meetings!....We are..."ON-LINE"!

No more introductions, social hour, or raffles...no travel...no meal...no "Meet & Greet"...BUT!... technical presentations still prevail, and they are very good. The efficiency, and reduced costs of "ON-LINE-meetings" is remarkable...no commuting... no parking...no wasted time... reduced costs...no hall to rent...no meal to purchase...no driving home at night...All this is quite different from our usual style.

What emphasis is being brought to the forefront by the Covid-19 pandemic that ASHRAE, can, and is addressing?...Ventilation comes to my mind...perhaps we need to be applying more and better ventilation, as well as some form of capturing and killing the airborne particles (particles that we THINK )...are among the means and methods of "virus transmission"... and that the concept of "social-distancing" seems to want to address?...Realize, too...that this is not ONLY about this latest, new virus...there are most likely to be others...as well as just protecting against what we know is already present.

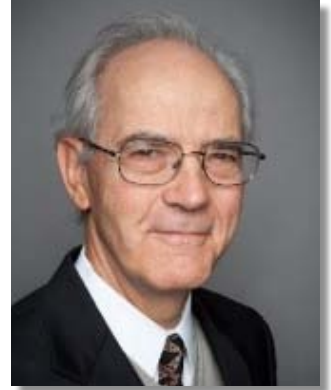
ASHRAE has historically been fond of "economizer cycles"...for years we gave little thought to there being anything terribly wrong with 'recirculated air'....after all, "recirculation of air" has been a lynch-pin of energy savings...Looks like that concept might change??...Maybe even all of our sophisticated "clean rooms" may require some additional "tuning"...Is it time to use something in our ventilation system to "kill" all of that "bad-stuff"?...Most projects that we see today seem to have a Dedicated Outside Air System (DOAS) somewhere in the design...The concept here seems to be...not to bring that "contaminated air" back to occupants...who contaminated the air, in the first place...We might call that "mechanical-social distancing".

ASHRAE Journal's latest edition had the article about "source-testing of domestic water" ...We have a number of ways to protect against bacteria such as Giardia, and the legionella bacillus ...basically, one can design a "short-term pasteurization" system that will automatically, or rather I should say... "unattended" ...create the "161 F for 30 seconds" that constitutes a definition of the pasteurizing effect...and this design attention can disinfect the "hot water"...BUT...the ASHRAE Journal article pointed out that "29 % of the municipal water systems tested" had unacceptable levels of Giardia...This leaves the "cold" water side of the domestic system at the mercy of the municipal water supply-quality....So...what are you going to do about that?...(Think municipal precautions that add chloramines to the water supply, to enhance the performance of "chlorine" as a disinfecting agent...and the issue that the chloramines ostensibly attack many types of gasket-material)

The Covid-19-situation may have made us more aware of one of the most basic needs of the population... "sanitation"... and "safe ventilation"... (Think...nursing homes ... homelessness...food service...crowds...)...ASHRAE does like to use the term...and take the responsibility for...the... "Built Environment"...so...what are you doing about this?...

Maybe we need to change our ways, and take more responsibility for areas in which..."historically"... we may have been less than diligent???

### Student Activities Committee



**Alicia Tan, Chair | Juliana Velez, K-12 STEM Lead | Megan Dawe, Post-High Lead | Richard Paillon, Scholarships and Grants Lead**

The student activities committee works to engage K-12 and post-high students and encourage them to consider potential careers in STEM and HVAC.

Alicia Tan joined the student activities committee for the 2017-18 year, working with post-high engagement and student branch outreach. She has since served as the K-12 Lead where she enjoyed leading and organizing STEM outreach activities. Since the 2019-20 year she has served as the student activities chair with the support from many engaged committee members who work to inspire the next generation of engineers.

Juliana joined the Student Activities committee for the 2016-17 year, and has served as the K12 Champion and Chair of the committee. This year she serves as the K12 Champion and looks for ways to engage our youngest potential members and provide opportunities for our chapter members to be active in our community.

Megan Dawe has supported Student Activities as the post-high lead starting in the 2019-2020 year. She joined the committee after recently being a student member and benefiting from many of the resources and scholarships provided by ASHRAE and the Golden Gate Chapter. She hopes to increase awareness and participation of more student members in the ASHRAE community.

Richard Paillon spearheads the scholarship and grant efforts of the student activities committee. He joined the student activities committee in the 2017-18 year. Last year he facilitated awarding \$54,500 worth of scholarships to 15 students and travel grants for two student members to attend the ASHRAE winter conference.

This year the committee will be working on connecting with the students remotely including finding ways to get STEM activities to K-12 students in their houses and engaging with the post-high students virtually. **If you are interested in joining the student activities committee or volunteering for K-12 or post-high outreach, please contact Alicia Tan at [aggcstudents@gmail.com](mailto:aggcstudents@gmail.com).**

### ASHRAE Scholarships Available with December 1 Deadlines

***By Richard Paillon, Scholarship and Grant Lead***

The American Society of Heating, Refrigerating and Air Conditioning Engineers (ASHRAE) has several scholarships available to students of qualified colleges and universities. These include institutions with either an ASHRAE student branch or with an engineering program accredited by ABET ([www.abet.org](http://www.abet.org)).

Scholarship types include Undergraduate for engineering students, \$3,000 to \$10,000; and the David Peters Scholarship, \$5,000 for students of specific universities that include Chico State and Cal Maritime. Only a single application need be made for all of the above scholarships. Get more information at the following links..

ASHRAE Scholarship Information: <https://www.ashrae.org/membership--conferences/student-zone/scholarships-and-grants/scholarship-program>

ASHRAE Scholarship Application: <http://web.ashrae.org/scholarshipApplication/>

***The deadline for applications to these scholarships is December 1, 2020.***

The above scholarships are in addition to those awarded by the local Golden Gate Chapter. There will be at least 14 of these scholarships ranging in value from \$2,000 to \$7,500. The deadline for applications for these scholarships will be in early spring of 2021. More information will be forthcoming.





*Manalee Nabar, Chair | Srushti Dupare, Member | Jena Jadallah, Member*

## Golden Gate ASHRAE is proud to introduce its newly formed Sustainability Committee, appointed by Chapter President, Alyse Falconer.

The goal of this committee is to facilitate sustainability related discussions and activities in order to raise awareness and provide education. There are myriad HVAC industry resources on Sustainable design, both within and outside ASHRAE, that this committee will aim to make more accessible to our members.

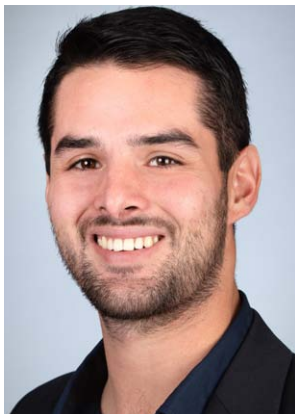
Below are the committee's focus areas for 2020-21 year:

1. Sustainability theme speaker series
2. Liaison with volunteer organizations to help the Bay Area community
3. Liaison with other technical organizations to put forth collaborative events
4. Conscious choices toward tracking carbon footprint of chapter operations

If you are interested in joining this committee and/ or have ideas for events, please contact Manalee Nabar at [Manalee.nabar@wsp.com](mailto:Manalee.nabar@wsp.com)

Manalee is a Mechanical Engineer at WSP, San Francisco and has recently joined the Golden Gate chapter board. She has been extensively involved in ASHRAE for the past six years both on Society and Chapter levels, previously being on the New York City chapter board. For this year she's looking forward to getting an interesting mix of events and volunteering opportunities for chapter members, while mindful that everyone is adapting to the 'new normal' around us.

## YEA



### YEA UPDATE

Hello, my name is **Alan McDermott**, and I was born and raised in Southern California. After graduating with my mechanical engineering degree from UCR, I started working with Russell Sigler in our Brea office as a Sales Engineer. I spent about 1.5 years at that office before transferring up to work in the Bay Area. I currently live in San Francisco and have been enjoying every second of it. When I have free time, you can catch me on the golf course or hiking trail. Now in my 3rd year in the HVAC industry, I have always been involved with ASHRAE through attending meetings, going to social/technical events, and taking the role of YEA Chair for Golden Gate. YEA is a way for young members to connect outside the workplace and further their personal/professional development.

This year we will have some challenges, but my goal is to ensure we are staying connected with one another and get more people involved with YEA. I am planning both social and technical events that focuses on topics that are important in today's climate. But, we also want to have fun and shine positive light on our current situation. I am looking forward to a great year!



*Sanjil Karki, Membership Promotion Chair*

[Sanjil.Karki@REHAU.com](mailto:Sanjil.Karki@REHAU.com)



*Michelle Dionello, Membership Promotion Co-Chair*

[Dionello.michelle@gene.com](mailto:Dionello.michelle@gene.com)

## Hello Golden Gate Chapter Members,

First of all, I would like to thank each and every member for continuing your membership with the Golden Gate Chapter. My name is Sanjil Karki and this is my second year as the Membership Chair for the chapter. I work as a business development associate for REHAU in their Building Solutions Group. I was also the recipient of 2019-2020 Blue Ribbon award (first place award) for Region X in membership promotion category.

Michelle Dionello will be Co-Chair for the membership promotion committee this year. Michelle is also a past president of the Golden Gate Chapter. Michelle works as a Facility Manager at Genentech.

Our goal for the membership committee this year is to provide the most to our members via various virtual events to learn exciting topics as well as network. We would also be reaching out to professionals such as Architects, Contractors as well as Facility Managers to join the chapter. A big pool of professionals from a diverse background only means a larger knowledge base for everyone to tap into.

If you have any question on joining ASHRAE or upgrading your membership from a lower grade to a higher grade, please contact me or Michelle. Thank you.

## Welcome New Members!

We are looking forward to another successful year of retaining our current members and recruiting new ones. When renewing your memberships, please pay your local chapter dues AND Society dues. Reminder: Golden Gate (Local) and Society dues both need to be paid. Yes, those are two separate transactions. Throughout the year I will list the members who joined over the previous month, be sure to keep a look out and give them a warm welcome!

Below are our newest members who joined over this past month:

### NEW MEMBERS

Mr Austin J Pittman  
Lynette Logan  
Mr Abram Mission  
Cobby Benson  
Miss Jennifer Wagner  
Mr Parham Ostadi  
Miss Alyssa Landrith  
Mr Dylan M Moore  
Mr Gabriel Tomas Fierro

Mr Colin Lee  
Mr David M Guerrant  
David Skabelund  
Angelique Calloway  
Jorge Vargas  
Colin McRae  
Gary Bracht  
Mr Walker Johnson





*Brian Chacon, Membership Promotion Chair, Research Promotion Chair*

## What is the Resource Promotion Campaign?

The RP Campaign is an annual fundraising campaign benefiting the funding of numerous ASHRAE Programs. These programs include:

- **ASHRAE Research**
- **ASHRAE Scholarships for undergraduate students**
- **ASHRAE Learning Institute (ALI) development of new courses & materials**
- **Graduate Research Projects (Grants-in-Aid)**
- **Young Engineers in ASHRAE (YEA) Leadership Training**
- **Permanently endowed support to all of the above programs**

The RP Campaign is overseen by the RP Committee, a standing ASHRAE Committee. The committee is made up of 14 Regional Vice Chairs (RVC), 1 Consultant (past RVC), 3 Vice Chairs (past Consultant), and Chair (past Vice Chair). Staff support includes a 3-member team based at ASHRAE Headquarters. **The RP Campaign raises over \$2.2 million a year from over 6,000 donors.** These donors are made up of ASHRAE Members, industry associations, and industry organizations.

*Your contributions are much appreciated. Thank you for making a difference and shaping tomorrow's built environment today.*

## A New Ashrae Year: New Research Promotion Goals is now \$23,500!

### DONORS IN 2020-2021:

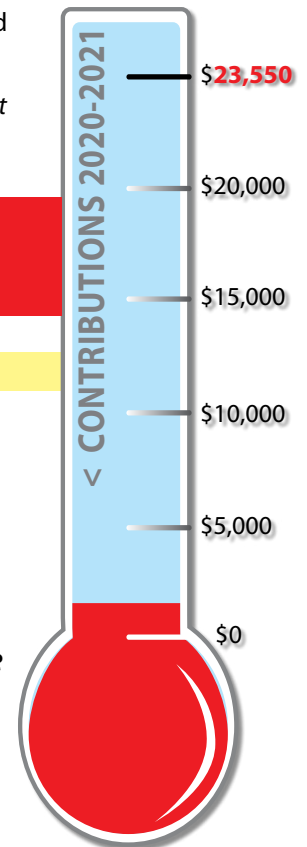
**ORGANIZATIONS**  
up to \$999

**ORGANIZATIONS**  
Up to \$99

**INDIVIDUALS**  
Up to \$999

### YOUR NAME WILL BE LISTED HERE

*Your contribution are much appreciated. Thank you for making a difference and shaping tomorrow's built environment today.*



Donations are tax deductible, by check, credit card or online at

[www.ashrae.org/contribute](http://www.ashrae.org/contribute)

Mail Checks to: ASHRAE RP: 1791 Tullie Circle, NE: Atlanta, GA 30329

For more information, please visit Research and Promotions section on

[www.ggashrae.org](http://www.ggashrae.org) or contact RP Chair Brian Chacon at

[bchacon@ascenthvac.com](mailto:bchacon@ascenthvac.com)

**GOAL:**  
**\$23,500**  
**CONTRIBUTIONS:**  
**\$150**



**Mitch Pinsker**  
**Chair**



**Blaine Conner**  
**Committee Member**

## **The Government Affairs Committee (GAC) works to local and national governments and encourages them to utilize ASHRAE guidelines as a basis for legislation and code updates.**

Mitch Pinsker joined the GAC committee for the 2019-20 year as chair. Mitch has kept the Golden Gate Chapter up to date on government action relating to energy, Covid-19 building response, and other realms where ASHRAE has influence. Mitch participated in the ASHRAE Region X Government Outreach Day with fellow ASHRAE member Scott

Wayland, which later resulted in Assemblymember Ting referencing ASHRAE guidelines in a bill about reopening schools and other buildings with respect to safety from Covid-19. The GAC committee looks forward to more Government outreach, locally and nationally, this year.

Blaine Conner joined the GAC as committee member for the 2020-21 year to help carry the momentum built last year. New to the golden gate chapter, he joins us from the East Coast's Champlain Valley Chapter, where he served in a variety of roles including CTTC Chair and President.

***If you are interested in joining the GAC or volunteering for outreach, please contact Mitch Pinsker at [mpinsker@aeieng.com](mailto:mpinsker@aeieng.com)***

### **GGASHRAE Donation: Saving Face**

15,200 shields at \$1.18 per shield

Shields sent to 55 organizations: Healthcare & teachers, 3 Native American reservations, furthest reach is Italy (!)



*"The \$1,400 donation was the shot in the arm we needed at a critical time."*

### **Ashrae's PPE Drive for Saving Face Yields \$1,400!**

The Golden Gate ASHRAE Chapter is proud to have contributed over \$1,400, which was money raised during our PPE drive, to Saving Face, a group which has made over 15,000 face shields. The face shields have protected healthcare workers, teachers, and other professionals at risk. The group has sent shields to at least three (3) Native American reservations, amongst 55 organizations. The furthest the shields have traveled to? Italy!

At a company level, Affiliated Engineers donated N95 masks, protective goggles, surgical masks and latex gloves to Sutter Health, as a part of this same PPE drive.

We thank you for contributing to this critical fundraiser.



## REDWOOD EMPIRE ASHRAE President introduction:

*Hello Fellow Golden Gate ASHRAE-ers,*

My name is Harrison Nichols, and I would like to introduce myself as the 2020-2021 President of the Redwood Empire ASHRAE section. I work as a sales engineer for Pacific Coast Trane out of our Petaluma sales office.

These are unprecedented times, but my goal for the year is to make the most out of the situation. We will be hosting virtual meetings for the foreseeable future, so I hope to see some of you GGASHRAE-ers, especially those of you that either live and/or work in the North Bay, at our meetings!

Sincerely, Harrison Nichols **REASHRAE President**

*Save the Date:*

REDWOOD EMPIRE GOLF TOURNAMENT  
October, 30 2020





## Chapter Technology Transfer Committee



**Blaine Conner, Co-Chair** | **Manalee Nabar, Co-Chair** | **Mitch Pinsker, Member**

The Chapter Technology Transfer Committee (CTTC) is responsible for arranging the technical meeting sessions throughout the chapter year. Establishing the meetings calendar, identifying engaging speakers, and making arrangements for successful sessions all fall under the CTTC. This year the committee will mainly focus on:

- *Actively engaging chapter members with quality content and stellar speakers*
- *Scout the best of Bay area projects for the ASHRAE Technology awards*
- *Diligently track the PAOE (Presidential Awards of Excellence) points for outstanding chapter operations and ensure we are aligned with the 2020 ASHRAE Presidential initiatives*

**Blaine** joined the CTTC as co-chair for the 2020-21 year as part of a renewed effort to enhance the capabilities of the Committee and provide addition support to the President and President Elect. New to the Golden Gate chapter, he joins us from the East Coast's Champlain Valley Chapter, where he served in a variety of roles including CTTC Chair and President.

**Manalee** is a Mechanical Engineer at WSP, San Francisco and has recently joined the Golden Gate chapter board. She has been extensively involved in ASHRAE for the past six years both on Society and Chapter levels, previously being on the New York City chapter board. For this year she's looking forward to getting an interesting mix of events and volunteering opportunities for chapter members, while mindful that everyone is adapting to the 'new normal' around us.

**Mitch Pinsker** joined the CTTC as a committee member for the 2020-20 year with the goal of supporting Golden Gate Chapter's quality programming. Mitch brings a combination of 13 years of experience in ASHRAE from the Bay Area, NYC, and Charlotte NC.

**If you are interested in joining the Chapter Technology Transfer Committee or have ideas on future programming topics, please reach out to Manalee at [Manalee.nabar@wsp.com](mailto:Manalee.nabar@wsp.com) or Blaine at [bconner@aeieng.com](mailto:bconner@aeieng.com).**

## Board of Governors

### PRESIDENT

Alyse Falconer, P.E.  
Point Energy Innovations  
(724) 448-5959  
[alyse@pointenergyinnovations.com](mailto:alyse@pointenergyinnovations.com)

### PRESIDENT-ELECT

Brian Chacon  
Ascent HVAC  
(714) 401-3828  
[bchacon@ascenthvac.com](mailto:bchacon@ascenthvac.com)

### SECRETARY

Jeremy Martinez  
CHC  
2293 Tripaldi Way  
Hayward, CA. 94545  
(510) 695-1415  
[jmartinez@chchydro.com](mailto:jmartinez@chchydro.com)

### TREASURER

John Gardner  
RF MacDonald  
(510) 736-6829  
[john.gardner@rfmacdonald.com](mailto:john.gardner@rfmacdonald.com)

### BOARD OF GOVERNORS

Juliana Velez  
Hatch Data  
(510) 703-3848  
[juliana.velez@hatchdata.com](mailto:juliana.velez@hatchdata.com)

Moana Reynau

PAE  
(510) 579-1750  
[moana.reynau@pae-engineers.com](mailto:moana.reynau@pae-engineers.com)

### IMMEDIATE PAST-PRESIDENT

Jason Lesser  
American Mechanical Inc.  
1275 Boulevard Way  
Walnut Creek, CA 94595  
(408) 569-0422  
[Jason.lesser@ami-hvac.com](mailto:Jason.lesser@ami-hvac.com)

## Committee Chairs

### CHAPTER TECHNOLOGY TRANSFER

Manalee Nabar  
[manalee.nabar@wsp.com](mailto:manalee.nabar@wsp.com)

Blaine Conner  
[bconner@aeieng.com](mailto:bconner@aeieng.com)

Mitch Pinsker  
[mpinsker@aeieng.com](mailto:mpinsker@aeieng.com)

### MEMBERSHIP PROMOTION

Sanjil Karki  
(415) 613-6760  
[sanjil.karki@rehau.com](mailto:sanjil.karki@rehau.com)

Michelle Dionello  
(650) 303-7566  
[michelle.dionello@gmail.com](mailto:michelle.dionello@gmail.com)

### RESOURCE PROMOTION

Brian Chacon  
(714) 401-3828  
[bchacon@ascenthvac.com](mailto:bchacon@ascenthvac.com)

Jason Lesser  
[jason.lesser@ami-hvac.com](mailto:jason.lesser@ami-hvac.com)

### STUDENT ACTIVITIES CHAIR

Alicia Tan  
[aggcstudents@gmail.com](mailto:aggcstudents@gmail.com)

### HISTORIAN

Tom Gilbertson  
(925) 376-4516  
[tomagilbertson@msn.com](mailto:tomagilbertson@msn.com)

### YEA (Young Engineers in ASHRAE)

Jake Barker  
C: (402) 643-0661  
[jbarker@airtreatment.com](mailto:jbarker@airtreatment.com)

Alan McDermott  
(415) 535-4241  
[amcdermott@siglers.com](mailto:amcdermott@siglers.com)

### FOUNDATION BOARD

Glenn Friedman  
(510) 263-1542  
[gfriedman@taylor-engineering.com](mailto:gfriedman@taylor-engineering.com)

### REDWOOD EMPIRE

Harrison Nichols  
(626) 808-1589  
[Harrison.Nichols@trane.com](mailto:Harrison.Nichols@trane.com)

### HONOR AND AWARDS

Scott Wayland  
(510) 508-2244  
[sewayland@comcast.net](mailto:sewayland@comcast.net)

### PUBLICITY

William Martin  
(510) 741-9100  
[william@conservationmechsys.com](mailto:william@conservationmechsys.com)

### TENNIS CHAIR

James Gronek  
(312) 456-2237  
[jgronek@esdglobel.com](mailto:jgronek@esdglobel.com)

### ELECTRONIC COMMUNICATIONS

Moana Reynau  
(510) 579-1750  
[Moana.Reynau@pae-engineers.com](mailto:Moana.Reynau@pae-engineers.com)

### GOVERNMENT AFFAIRS

Mitch Pinsker  
(415) 764.3751  
[mpinsker@aeieng.com](mailto:mpinsker@aeieng.com)

### SUSTAINABILITY

\* See page 7

*A big thank you to the following sponsors for supporting publication of the Fog Dispenser.*

Your Card here

Your Card here

Your Card here

Your Card here

### **SPONSORSHIP RATES:**

One time rate: \$50 | 4-month rate: \$125 | Yearly Rate (9 issues): \$400

Contact the Fog Dispenser editor Jeremy Martinez - [jmartinez@chchydro.com](mailto:jmartinez@chchydro.com)

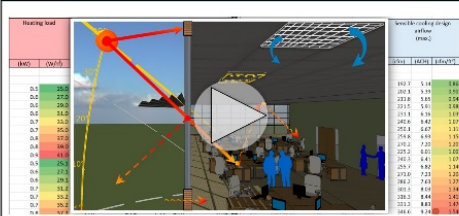


IES Ltd. have provided three 90-minute training videos on heating & cooling load calculations and HVAC equipment modeling.

Access to the videos is free: <http://ow.ly/9kwl30r6AnU>

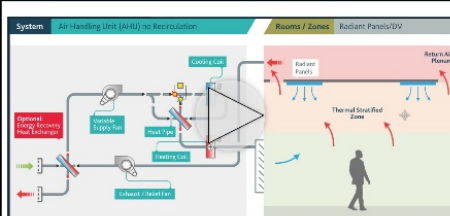
FREE 3-Part Training Series:

ASHRAE Heating & Cooling Loads



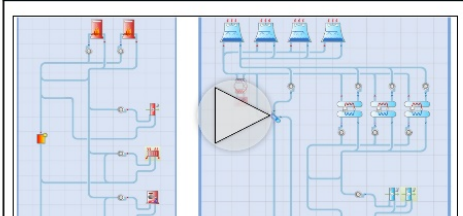
- Model Geometry & HVAC Zoning
- Envelope, Solar, & Internal Gains
- Calculate heating and cooling loads for rooms and zones using the **ASHRAE Heat Balance Method**
- Export results in PDF & XLS formats
- Compare against Rules of Thumb

Airside HVAC Systems



- Airside HVAC Systems
- Airside Components (coils, fans, ducts, ERVs, economizers, etc.)
- Airside Controllers (e.g. dual max)
- HVAC System Design Wizard
- Auto-Sizing & Energy Simulation

Waterside & Plant HVAC Systems



- Non-hydronic Plant (DX, VRF, Gas Furnaces, etc.)
- Hydronic Plant (Boilers, Chillers, Cooling Towers, Pumps, etc.)
- Sequencing & Waterside Controls
- Auto-Sizing & Energy Simulation
- Scheduled Loads Simulation